

# ASSEMBLY INSTRUCTIONS

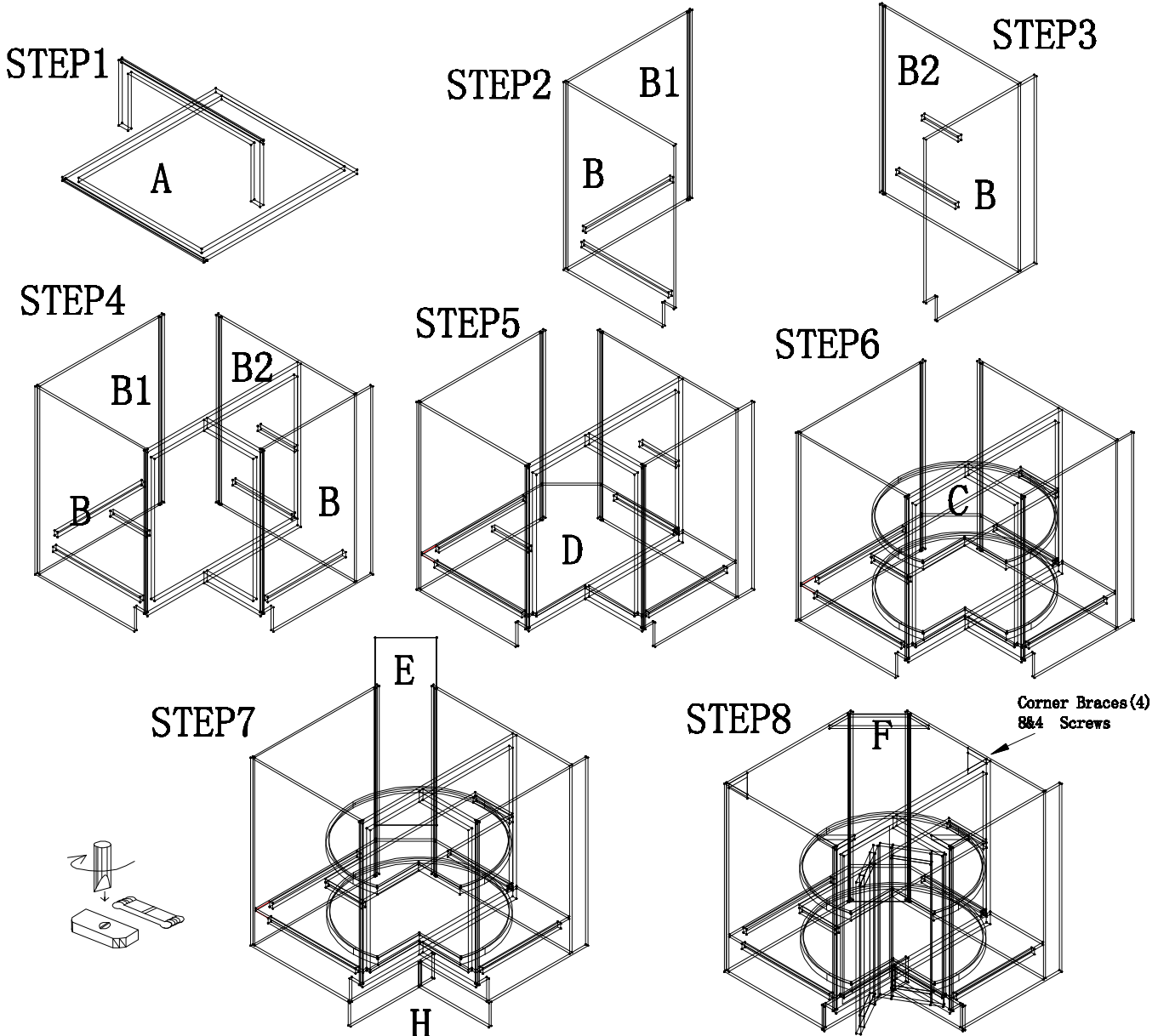
## DIGANAL CORNER BASE CABINET (DCB33、DCB36)

### CABINET PARTS LIST

A-Largest Face Frame/ Smallest Face Frame & Doors B-End Panels(2)  
B1-Short End panel B2-long End Panel C-Shelf W/Turntable D-Bottom W/Turntable  
E-Back Panel F-Top Back Brace H-Toe Kicks (2)

### HARDWARE PARTS LIST

1、Corner Braces(4) 2、Screws(Ø3.5\*25-4) 3、Screws(Ø3\*12-8)  
4、Shelf/W &Bottom/W Screws(Ø3\*20-14) 5、Toe Kick Screws(Ø3\*12-2)  
6、Largest Face Farme Screws(Ø3\*12-2) 7、Back Panel Screws (Ø3\*10-2)



Your cabinet is complete. For installation, consult a professional contractor or building supplier for the proper installation method or materials to be used for your existing wall condition (e.g., wood, concrete, tile, etc.).