

# ASSEMBLY INSTRUCTIONS

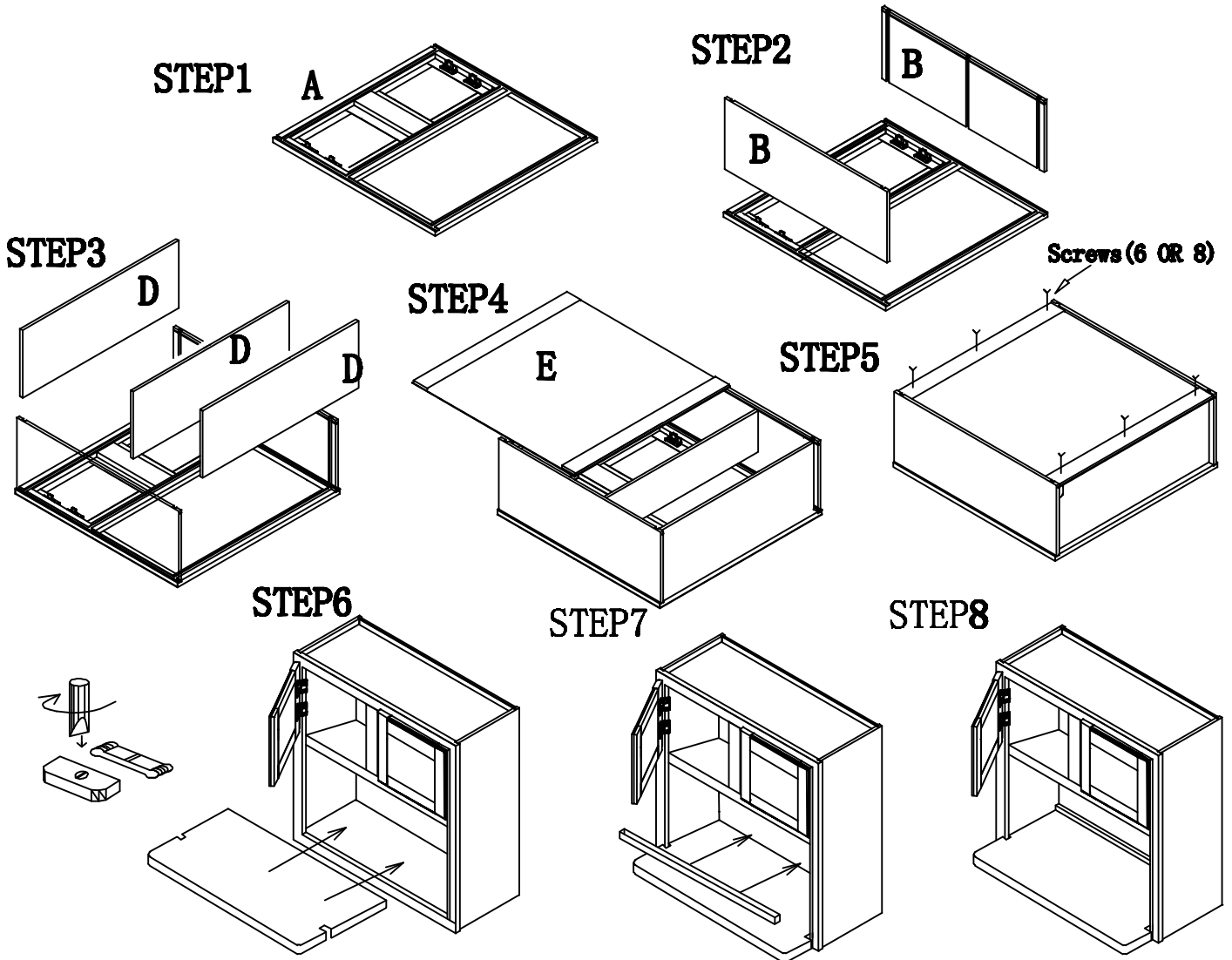
## WALL CABINET ( MWC3030 X12 )

### CABINET PARTS LIST

A-Doors & Face Frame    B-End Panels(3)    D-Bottom Panel & D-Top Panel  
E-Back Panel

### HARDWARE PARTS LIST

1. Screws (Ø3.5\*25) 12 OR 16



Your cabinet is complete. For installation, consult a professional contractor or building supplier for the proper installation method or materials to be used for your existing wall condition (e.g., wood, concrete, tile, etc.).